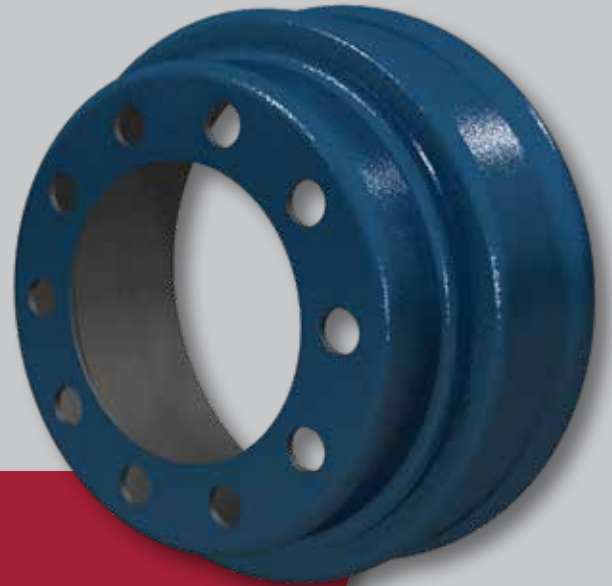
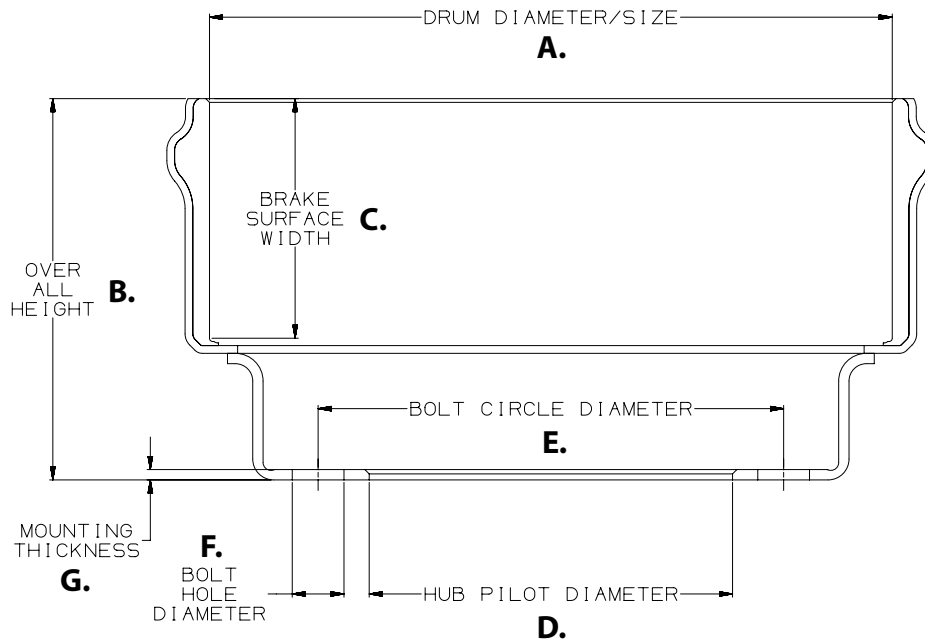


CentriFuse®



90600B SPECIFICATIONS

- | | |
|------------------------------------|------------------------------|
| A. Drum Diameter/Size: 16.5" x 5" | F. Bolt Hole Diameter: 1.25" |
| B. Overall Depth: 9.22" | G. Mounting Thickness: 0.25" |
| C. Brake Surface Width: 5.82" | H. Number of Bolt Holes: 10 |
| D. Hub Pilot Diameter: 8.78" | I. Weight: 76 lbs. |
| E. Bolt Circle Diameter: 285.75 mm | |



For more information on
CentriFuse, call 855.743.3733
or visit www.motorwheel-intl.com

90600B Rev A 10-24

©2024 Motor Wheel, Inc. All Rights Reserved. All trademarks shown are owned by Motor Wheel, Inc., or one of its affiliates, in one or more countries.